

# SALUTE & BELLEZZA



- AM/RF Razor Blade Keepers
- AM/RF Health & Beauty Keepers
- AM/RF Showcase Keepers
- AM /RF Collapsible Keepers
- AM/RF Oral B Keepers



Pescara - V.le G. Marconi 253 ☎ 085.69350  
[www.isafsas.it](http://www.isafsas.it) • [isafsas@alice.it](mailto:isafsas@alice.it)

**ALPHA**  
High Theft Solutions

## AM/RF Razor Blade Keepers



## Razor Blade Keeper

Applications: Mach 3, Mach 3 Turbo, 4-8 pack.



SAP Code 10006045	Razor Blade Keeper. AM				!
	ALPHA code ACM306BNDL	QTY 48	INT. DIM. (cm.) 11,33 x 9,65 x 1,91	EXT. DIM. (cm.) 13,11 x 10,26 x 3,05	
SAP Code 9172425	Razor Blade Keeper. RF				✓
	ALPHA code ACM306BRFL	QTY 48	INT. DIM. (cm.) 11,33 x 9,65 x 1,91	EXT. DIM. (cm.) 13,11 x 10,26 x 3,05	



## Gillette Fusion Keeper

Applications: Gillette Fusion M3 Power, Mach 3, Venus Divine, 4-8 pack.



SAP Code 9233148	Gillette Fusion Keeper. AM				✓
	ALPHA code ACM346BND	QTY 20	INT. DIM. (cm.) 11,30 x 10,60 x 2,70	EXT. DIM. (cm.) 13,15 x 11,25 x 3,95	
SAP Code 10005070	Gillette Fusion Keeper. RF				✓
	ALPHA code ACM346BRF	QTY 20	INT. DIM. (cm.) 11,30 x 10,60 x 2,70	EXT. DIM. (cm.) 13,15 x 11,25 x 3,95	



## 3 Alarm Razor Keeper

Applications: Mach 3, Mach 3 Turbo, 4 -8 pack.



SAP Code 9406275	Gillette Fusion. 3 Alarm Keeper. AM				!
	ALPHA code 3S3356BND	QTY 20	INT. DIM. (cm.) 11,30 x 10,60 x 3,60	EXT. DIM. (cm.) 13,15 x 11,15 x 4,85	
SAP Code 9406276	Gillette Fusion. 3 Alarm Keeper. RF				✓
	ALPHA code 3S3356BRF	QTY 20	INT. DIM. (cm.) 11,30 x 10,60 x 3,60	EXT. DIM. (cm.) 13,15 x 11,15 x 4,85	



## Single Rod Hang Tag

Applications: blisters



SAP Code 9406523	Single Rod Hang Tag. AM			!
	ALPHA code HTAGSRND	QTY 20	DIM. (cm.) 2,80 x 4,70 x 1,70	
SAP Code 9406524	Single Rod Hang Tag. RF			!
	ALPHA code HTAGSRRF	QTY 20	DIM. (cm.) 2,80 x 4,70 x 1,70	



AM/RF Razor Blade Keepers



**Venus Keeper** S<sup>3</sup>

Applications: Venus Razor Blade.

SAP Code 9281430	Venus Keeper. AM <span style="float: right;">✓</span>			
	ALPHA code ACM347BND	QTY 20	INT. DIM. (cm.) 9,45 x 10,20 x 4,84	EXT. DIM. (cm.) 11,21 x 10,70 x 5,82
SAP Code 9281365	Venus Keeper. RF <span style="float: right;">!</span>			
	ALPHA code ACM347BRF	QTY 20	INT. DIM. (cm.) 9,45 x 10,20 x 4,84	EXT. DIM. (cm.) 11,21 x 10,70 x 5,82
ON DEMAND	Lady Gillette 1 and 3 Alarm KEEPERS			⊘
	9405566, 9405567, 9405568, 9405569,			



**Gillette Mach3 Keeper** S<sup>3</sup>

Applications: Gillette Mach 3 -12 pack.

SAP Code 9233202	Gillette Mach3-12 pack Keeper. AM <span style="float: right;">!</span>			
	ALPHA code ACM356BND	QTY 20	INT. DIM. (cm.) 11,30 x 10,60 x 3,61	EXT. DIM. (cm.) 13,15 x 11,15 x 4,85
SAP Code 9232443	Gillette Mach3 -12 pack Keeper. RF <span style="float: right;">✓</span>			
	ALPHA code ACM356BRF	QTY 20	INT. DIM. (cm.) 11,30 x 10,60 x 3,61	EXT. DIM. (cm.) 13,15 x 11,15 x 4,85
ON DEMAND	Gillette Mach3 16-Pack Keeper			⊘
	9405661, 9405662			



**Razor Blade Box Clamshell Keeper** - no need to add hang tabs S<sup>3</sup>

Applications: razor blade 4-8 pack.

SAP Code 10100944	Razor Blade Box Clamshell Keeper. AM <span style="float: right;">✓</span>			
	ALPHA code ACM390BND	QTY 20	INT. DIM. (cm.) 12.98 x 9.61 x 4.70	EXT. DIM. (cm.) 14.4 x 10.2 x 5.10
SAP Code 10100945	Razor Blade Box Clamshell Keeper. RF <span style="float: right;">✓</span>			
	ALPHA code ACM390BRF	QTY 20	INT. DIM. (cm.) 12.98 x 9.61 x 4.70	EXT. DIM. (cm.) 14.4 x 10.2 x 5.10
ON DEMAND	Razor Blade Box Bottom Load Keeper			⊘
	10100920,10100941			



**Health & Beauty Keeper #4** S<sup>3</sup>

Applications: Gillette Venus , Gillette Mach 3, Mach Turbo 4-8 pack.

SAP Code 10005158	Health & Beauty Keeper #4. AM <span style="float: right;">✓</span>			
	ALPHA code ACM316BENDL	QTY 20	INT. DIM. (cm.) 11,27 x 9,67 x 2,48	EXT. DIM. (cm.) 13,16 x 10,31 x 3,81
SAP Code 9192042	Health & Beauty Keeper #4. RF <span style="float: right;">✓</span>			
	ALPHA code ACM316BERFL	QTY 20	INT. DIM. (cm.) 11,27 x 9,67 x 2,48	EXT. DIM. (cm.) 13,16 x 10,31 x 3,81

# AM/RF Health & Beauty Keepers



## Health & Beauty Keeper #1

Applications: Gillette Razor, pregnancy test, body lotions.



SAP Code 10005152	Health & Beauty Keeper #1. AM				
	ALPHA code ACM416BENDL	QTY 20	INT. DIM. (cm.) 20,17 x 9,98 x 5,61	EXT. DIM. (cm.) 22,38 x 10,41 x 7,13	

SAP Code 9192091	Health & Beauty Keeper #1. RF				
	ALPHA code ACM416BERFL	QTY 20	INT. DIM. (cm.) 20,17 x 9,98 x 5,61	EXT. DIM. (cm.) 22,38 x 10,41 x 7,13	



## Health & Beauty Keeper #2

Applications: cream, body lotion, perfume.



SAP Code 10005155	Health & Beauty Keeper #2. AM				
	ALPHA code ACM216BENDL	QTY 20	INT. DIM. (cm.) 13,66 x 9,04 x 6,17	EXT. DIM. (cm.) 16,03 x 9,83 x 7,47	

SAP Code 10005156	Health & Beauty Keeper #2. RF				
	ALPHA code ACM216BERFL	QTY 20	INT. DIM. (cm.) 13,66 x 9,04 x 6,17	EXT. DIM. (cm.) 16,03 x 9,83 x 7,47	



## Health & Beauty Keeper #3

Applications: day and night cream, anti-aging serum, small perfume.



SAP Code 10005157	Health & Beauty Keeper #3. AM				
	ALPHA code AVM116BENDL	QTY 20	INT. DIM. (cm.) 8,26 x 7,13 x 7,13	EXT. DIM. (cm.) 10,41 x 7,77 x 8,40	

SAP Code 9192050	Health & Beauty Keeper #3. RF				
	ALPHA code AVM116BERFL	QTY 20	INT. DIM. (cm.) 8,26 x 7,13 x 7,13	EXT. DIM. (cm.) 10,41 x 7,77 x 8,40	



## Health & Beauty Keeper #5

Applications: shower gel, pharmacy lotions.



SAP Code 9192093	Health & Beauty Keeper #5. AM				
	ALPHA code AVM426BENDL	QTY 20	INT. DIM. (cm.) 19,98 x 7,18 x 5,48	EXT. DIM. (cm.) 22,23 x 7,95 x 6,99	

SAP Code 9192095	Health & Beauty Keeper #5. RF				
	ALPHA code AVM426BERFL	QTY 20	INT. DIM. (cm.) 19,98 x 7,18 x 5,48	EXT. DIM. (cm.) 22,23 x 7,95 x 6,99	





**Health & Beauty Keeper #6**

Applications: perfumers, moisturizer.



SAP Code 9192097	<b>Health &amp; Beauty Keeper #6. AM</b>				
	ALPHA code AVM446BENDL	QTY 20	INT. DIM. (cm.) 16,99 x 7,18 x 3,47	EXT. DIM. (cm.) 19,20 x 7,95 x 4,93	
SAP Code 9192099	<b>Health &amp; Beauty Keeper #6. RF</b>				
	ALPHA code AVM446BERFL	QTY 20	INT. DIM. (cm.) 16,99 x 7,18 x 3,47	EXT. DIM. (cm.) 19,20 x 7,95 x 4,93	



**Health & Beauty Keeper #7**

Applications: hydrating lotion, Aveeno.



SAP Code 9192075	<b>Health &amp; Beauty Keeper #7. AM</b>				
	ALPHA code AVM226BENDL	QTY 20	INT. DIM. (cm.) 13,97 x 7,18 x 4,97	EXT. DIM. (cm.) 16,33 x 7,95 x 6,35	
SAP Code 9192077	<b>Health &amp; Beauty Keeper #7. RF</b>				
	ALPHA code AVM226BERFL	QTY 20	INT. DIM. (cm.) 13,97 x 7,18 x 4,97	EXT. DIM. (cm.) 16,33 x 7,95 x 6,35	



**Health & Beauty Keeper #8**

Applications: eye protection cream, serum, lifting, perfume.



SAP Code 9192057	<b>Health &amp; Beauty Keeper #8. AM</b>				
	ALPHA code AVM126BENDL	QTY 20	INT. DIM. (cm.) 10,99 x 7,18 x 4,19	EXT. DIM. (cm.) 13,34 x 7,95 x 5,54	
SAP Code 9192059	<b>Health &amp; Beauty Keeper #8. RF</b>				
	ALPHA code AVM126BERFL	QTY 20	INT. DIM. (cm.) 10,99 x 7,18 x 4,19	EXT. DIM. (cm.) 13,34 x 7,95 x 5,54	



**Health & Beauty Keeper #9**

Applications: body lotion and oil, sun cream.



SAP Code 9230344	<b>Health &amp; Beauty Keeper #9. AM</b>				
	ALPHA code AVM466BNDL	QTY 20	INT. DIM. (cm.) 23,75 x 7,21 x 6,22	EXT. DIM. (cm.) 25,91 x 8 x 7,67	
SAP Code 9231601	<b>Health &amp; Beauty Keeper #9. RF</b>				
	ALPHA code AVM466BRFL	QTY 20	INT. DIM. (cm.) 23,75 x 7,21 x 6,22	EXT. DIM. (cm.) 25,91 x 8 x 7,67	

AM/RF Health & Beauty Keepers



**Health & Beauty Keeper #10**

Applications: peeling kit, whitening teeth kit.



SAP Code 9230342	<b>Health &amp; Beauty Keeper #10. AM</b>				
	ALPHA code AVM412BNDL	QTY 20	INT. DIM. (cm.) 20,07 x 14,99 x 6,02	EXT. DIM. (cm.) 22,23 x 15,75 x 7,42	

SAP Code 9230330	<b>Health &amp; Beauty Keeper #10. RF</b>				
	ALPHA code AVM412BRFP	QTY 20	INT. DIM. (cm.) 20,07 x 14,99 x 6,02	EXT. DIM. (cm.) 22,23 x 15,75 x 7,42	

<b>ON DEMAND</b>	<b>Stomach Aliment Keeper</b>			
	9409118, 9409130, 9409119, 9409131			



**Dercos Vials Keeper**

Applications: vials, health & beauty.



SAP Code 10005227	<b>Dercos vials Keeper. AM</b>				
	ALPHA code ACM336BNDL	QTY 48	INT. DIM. (cm.) 12,47 x 12,50 x 4,99	EXT. DIM. (cm.) 14,38 x 13,18 x 6,15	

SAP Code 9172900	<b>Dercos vials. Keeper. RF</b>				
	ALPHA code ACM336BRFL	QTY 48	INT. DIM. (cm.) 12,47 x 12,50 x 4,99	EXT. DIM. (cm.) 14,38 x 13,18 x 6,15	

<b>ON DEMAND</b>	<b>Family Planning Keeper. AM,RF</b>			
	9406274, 9406272			



**685 Infant formula/Multi-Use Keeper**

Applications: infant formula Aptamil, rectangular merchandise



SAP Code 10105303	<b>685 Keeper - Double technology. AM&amp;RF</b>				
	ALPHA code AVM685BNDRF	QTY 12	INT. DIM. (cm.) 19,98 x 13,28 x 11,81	EXT. DIM. (cm.) 22,78 x 13,99 x 13,18	





**Collapsible Keeper #1**

Applications: perfumes and creams.



SAP Code 10101461	<b>Collapsible Keeper #1. AM&amp;RF</b>				
	ALPHA code S3COL101BNDRF	QTY 20	INT. DIM. (cm.) 14.30-19.40 x 7.96 x 5.56	EXT. DIM. (cm.) 15.17-20.20 x 9.44 x 7.31	



**Collapsible Keeper #2**

Applications: perfumes and creams.



SAP Code 10101462	<b>Collapsible Keeper #2. AM&amp;RF</b>				
	ALPHA code S3COL102BNDRF	QTY 20	INT. DIM. (cm.) 12.47-15.60 x 7.43 x 6.86	EXT. DIM. (cm.) 13.27-16.40 x 8.91 x 8.61	



**Collapsible Keeper #3**

Applications: perfumes and creams.



SAP Code 10101463	<b>Collapsible Keeper #3. AM&amp;RF</b>				
	ALPHA code S3COL103BNDRF	QTY 20	INT. DIM. (cm.) 13.37-17.90 x 10.14 x 7.46	EXT. DIM. (cm.) 14.17-18.70 x 11.62 x 9.21	



**Collapsible Keeper #4**

Applications: perfumes and creams.



SAP Code 10101464	<b>Collapsible Keeper #4. AM&amp;RF</b>				
	ALPHA code S3COL104BNDRF	QTY 20	INT. DIM. (cm.) 7.53-9.26 x 8.6 x 8.5 <sup>1</sup>	EXT. DIM. (cm.) 9.17-10.90 x 9.98 x 9.40	

# AM/RF Showcase Keepers



## Showcase Keeper #1

Applications: perfumes.



SAP Code 9238557	Showcase Keeper #1. AM			
	ALPHA code S3HB101NDL	QTY 20	INT. DIM. (cm.) 14,7 x 7,77 x 5,23	EXT. DIM. (cm.) 16,67 x 8,74 x 6,47
SAP Code 9238558	Showcase Keeper #1. RF			
	ALPHA code S3HB101RFL	QTY 20	INT. DIM. (cm.) 14,7 x 7,77 x 5,23	EXT. DIM. (cm.) 16,67 x 8,74 x 6,47



## Showcase Keeper #2

Applications: perfumes.



SAP Code 9238559	Showcase Keeper #2. AM			
	ALPHA code S3HB102NDL	QTY 20	INT. DIM. (cm.) 19,77 x 7,77 x 5,23	EXT. DIM. (cm.) 21,75 x 8,74 x 6,47
SAP Code 9238560	Showcase Keeper #2. RF			
	ALPHA code S3HB102RFL	QTY 20	INT. DIM. (cm.) 19,77 x 7,77 x 5,23	EXT. DIM. (cm.) 21,75 x 8,74 x 6,47



## Showcase Keeper #3

Applications: perfumes.



SAP Code 9238631	Showcase Keeper #3. AM			
	ALPHA code S3HB103NDL	QTY 20	INT. DIM. (cm.) 12,79 x 7,1 x 6,46	EXT. DIM. (cm.) 14,7 x 8,23 x 7,7
SAP Code 9238632	Showcase Keeper #3. RF			
	ALPHA code S3HB103RFL	QTY 20	INT. DIM. (cm.) 12,79 x 7,1 x 6,46	EXT. DIM. (cm.) 14,7 x 8,23 x 7,7



## Showcase Keeper #4

Applications: perfumes.



SAP Code 9238633	Showcase Keeper #4. AM			
	ALPHA code S3HB104NDL	QTY 20	INT. DIM. (cm.) 16,6 x 7,1 x 6,46	EXT. DIM. (cm.) 18,58 x 8,23 x 7,7
SAP Code 9238634	Showcase Keeper #4. RF			
	ALPHA code S3HB104RFL	QTY 20	INT. DIM. (cm.) 16,6 x 7,1 x 6,46	EXT. DIM. (cm.) 18,58 x 8,23 x 7,7







**Showcase Keeper #5**

Applications: perfumes, anti-aging cream.



SAP Code 9238635	Showcase Keeper #5. AM				
	ALPHA code S3HB105NDL	QTY 20	INT. DIM. (cm.) 14,06 x 9,66 x 7,12	EXT. DIM. (cm.) 16,04 x 10,91 x 8,36	
SAP Code 9238636	ShowCase Keeper #5. RF				
	ALPHA code S3HB105RFL	QTY 20	INT. DIM. (cm.) 14,06 x 9,66 x 7,12	EXT. DIM. (cm.) 16,04 x 10,91 x 8,36	



**Showcase Keeper #6**

Applications: perfumes, body lotions.



SAP Code 9238637	Showcase Keeper #6. AM				
	ALPHA code S3HB106NDL	QTY 20	INT. DIM. (cm.) 18,5 x 9,66 x 7,12	EXT. DIM. (cm.) 20,48 x 10,91 x 8,36	
SAP Code 9238638	Showcase Keeper #6. RF				
	ALPHA code S3HB106RFL	QTY 20	INT. DIM. (cm.) 18,5 x 9,66 x 7,12	EXT. DIM. (cm.) 20,48 x 10,91 x 8,36	



**Showcase Keeper #7**

Applications: perfumes, skin care.



SAP Code 9238639	Showcase Keeper #7. AM				
	ALPHA code S3HB107NDL	QTY 20	INT. DIM. (cm.) 15,2 x 12,16 x 7,71	EXT. DIM. (cm.) 17,18 x 13,52 x 8,95	
SAP Code 9238640	Showcase Keeper #7. RF				
	ALPHA code S3HB107RFL	QTY 20	INT. DIM. (cm.) 15,2 x 12,16 x 7,71	EXT. DIM. (cm.) 17,18 x 13,52 x 8,95	



**Showcase Keeper #8**

Applications: perfumes.



SAP Code 9414087	Showcase Keeper #8. AM				
	ALPHA code S3HB108RF	QTY 10	INT. DIM. (cm.) 13,57 x 13,60 x 13,60	EXT. DIM. (cm.) 15,52 x 16,5 x 14,78	
SAP Code 9414088	Showcase Keeper #8. RF				
	ALPHA code S3HB108ND	QTY 10	INT. DIM. (cm.) 13,57 x 13,60 x 13,60	EXT. DIM. (cm.) 15,52 x 16,5 x 14,78	



**Showcase Keeper #9**

Applications: perfumes.



SAP Code 10103800	Showcase Keeper #9. AM&RF				
	ALPHA code S3HB109NDRF	QTY 20	INT. DIM. (cm.) 12 x 9.20x 10.1	EXT. DIM. (cm.) 14.5 x 11.8 x 11.2	



# Oral B Solutions



## Oral B Electric Toothbrush Keeper

Applications: Oral B electric toothbrush.





SAP Code 9179499	AVM966 Keeper. AM 			
	ALPHA code AVM966BNDL	QTY 6	INT. DIM. (cm.) 27,43 x 22,61 x 13,72	EXT. DIM. (cm.) 29,60 x 23,52 x 15,24
SAP Code 9179500	AVM966 Keeper. RF 			
	ALPHA code AVM966BRFL	QTY 6	INT. DIM. (cm.) 27,43 x 22,61 x 13,72	EXT. DIM. (cm.) 29,60 x 23,52 x 15,24



## Small Oral B Clamshell Keeper

Applications: Oral B, double pack.





SAP Code 9292603	Oral B. 2 Pack. Small. AM 			
	ALPHA code AVM237BND	QTY 50	INT. DIM. (cm.) 22,09 x 6,05 x 2,1	EXT. DIM. (cm.) 22,9 x 8,30 x 2,53
SAP Code 9292604	Oral B. 2 Pack. Small. RF 			
	ALPHA code AVM237BRF	QTY 50	INT. DIM. (cm.) 22,09 x 6,05 x 2,1	EXT. DIM. (cm.) 22,9 x 8,30 x 2,53



## Large Oral B Clamshell Keeper

Applications: Oral B, 8 pack.



SAP Code 9292605	Oral B. 8 Pack. Large. AM 			
	ALPHA code AVM238BND	QTY 50	INT. DIM. (cm.) 22,09 x 6,0 x 3,45	EXT. DIM. (cm.) 22,9 x 8,30 x 3,88
SAP Code 9292606	Oral B. 8 Pack. Large. RF 			
	ALPHA code AVM238BRF	QTY 50	INT. DIM. (cm.) 22,09 x 6,0 x 3,45	EXT. DIM. (cm.) 22,9 x 8,30 x 3,88



# KEEP YOUR SMILE



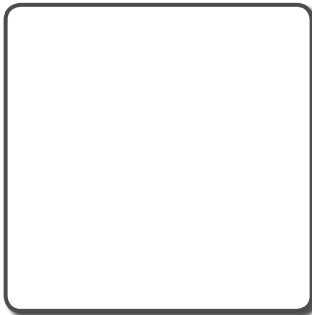
Il Furto di prodotti per lo sbiancamento dei denti è in forte aumento. Molti rivenditori stanno ponendo freno al fenomeno chiudendo le confezioni dentro gli espositori a vetro, con il relativo calo delle vendite.

Le soluzioni Alpha rendono i prodotti whitestrip accessibili dai clienti, rendendoli liberi di scegliere e potenziando così le performance di vendita.

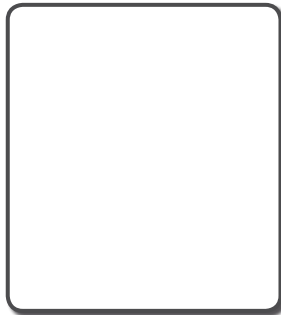
**Non lasciate che i furti possano "spogliare" i vostri profitti. Scegli Alpha.**



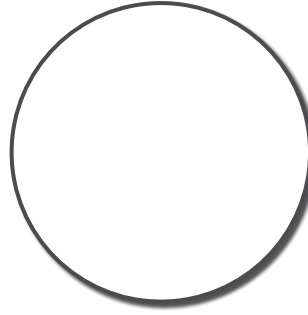
# Etichette adesive disattivabili



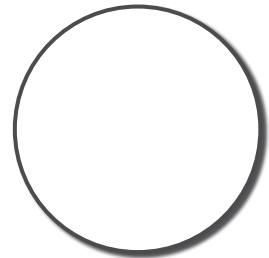
**7103188 Serie 410 EP**  
41x41 mm bianca TT disatt.  
rotolo 2000 pz.



**7174997 Serie 710 EP**  
34,6x41,1 mm bianca TT disatt.  
rotolo 2000 pz.



**7262740  
2900 Serie EP Round**  
Ø 40 mm bianca TT disatt.  
rotolo 2000 pz.



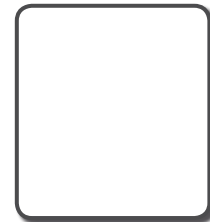
**7666078  
2900 Serie EP Round**  
Ø 33 mm bianca TT disatt.  
rotolo 2000 pz.



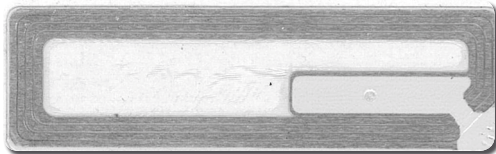
**7447413 Serie 2815 EP**  
49,3x26,7 mm bianca TT disatt.  
rotolo 2000 pz.



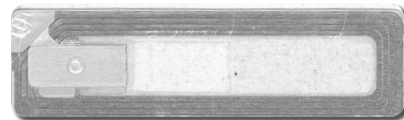
**7123511 Serie 3110 EP**  
47x22 mm bianca TT disatt.  
rotolo 2000 pz.



**7576428 Serie 2410 EP PST**  
26x28,6 mm bianca TT disatt.  
rotolo 2000 pz.



**7423511 Serie 3210 EP**  
19x26 mm trasparente TT disatt.  
rotolo 2000 pz.



**xxx Serie xx EP**  
15x52 mm trasparente TT disatt.  
rotolo 2000 pz.



**7150318 Falso BC**  
40x40 mm bianca TT disatt.  
rotolo 2000 pz.



**7232019 Falso BC**  
30x40 mm bianca TT disatt.  
rotolo 2000 pz.



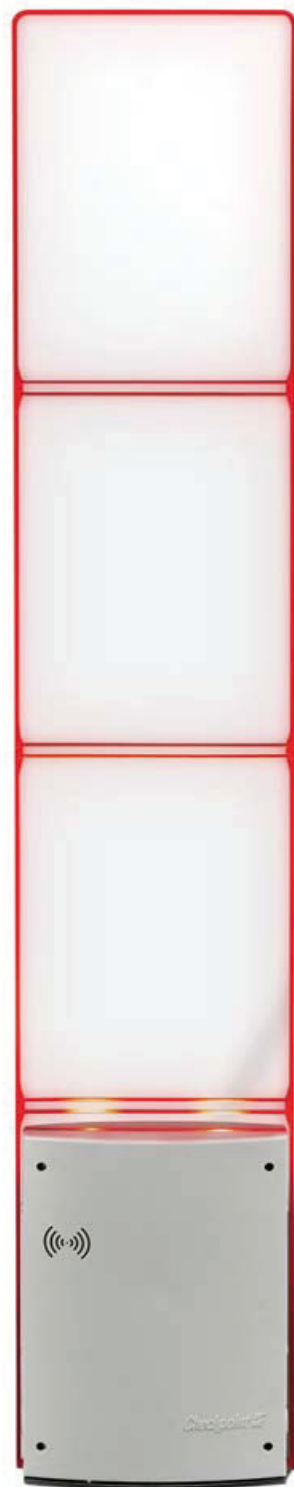
**7586128 Falso BC - EP**  
26x28,6 mm bianca TT disatt.  
rotolo 2000 pz.

# Etichette adesive trasparenti RF



# EVOLVE iRANGE G35

MERCHANDISE AVAILABILITY SOLUTIONS



Personalizzazione  
con logo aziendale  
opzionale

# EVOLVE P10/P20

*Protezione di 1° classe*



Le antenne della serie P sono belle da vedere e hanno sostegni robusti, progettati per resistere agli ambienti più difficili del punto vendita.

- Il design attraente e moderno permette alle antenne di integrarsi facilmente nello stile del negozio
- Adatte alla maggior parte degli ambienti di vendita
- I pannelli laterali di metallo spazzolato garantiscono una durata maggiore e migliorano l'estetica
- Integrazione opzionale dell'unità EVOLVE VisiPlus™ per lo Smart Alarm Management ed il conta-persone
- Compatibili con tutte le soluzioni EAS di Checkpoint e con le etichette e gli accessori RF.

# PLUS

Le antenne Checkpoint Systems di 3<sup>a</sup> Generazione sono il futuro. Le incomparabili ed avanzate caratteristiche di questa antenna consentono ai retailer di proteggere i loro prodotti ottenendo il massimo dei benefici.

La robustezza, l'estetica nuova e piacevole, la resistenza agli urti e ai liquidi, la compatibilità con l'RFID, la gamma di modelli e colori sono le caratteristiche di questa nuova linea.

Famiglia 3G



## **Tecnologia.**

Nuova Radio Frequenza Digitale 8.2 MHz.

## **Caratteristiche della struttura.**

Provata resistenza agli urti.

Pescara - V.le G. Marconi 253 - Tel. 085.693505

[www.isafsas.it](http://www.isafsas.it)

**isaf**  
s.a.s. di ANTONIO ISACCO & C.